



The space to work effectively.



November 2022

An integrated enterprise workplace solution.

www.afreespace.com

Freespace.



Welcome to Freespace.

We are pioneers in workplace technology solutions that help organizations make science-based decisions to achieve:

- A flexible and productive work environment to enable hybrid working.
- Efficient and effective use of real estate space.
- Proactive provision of workplace services using automation.
- Accelerated adoption of workplace change.
- The drive to NET Zero using smart building controls.

We operate globally through our network of offices and local partners, enabling smooth and seamless deployments of our solutions and services. We pride ourselves on providing highly responsive support throughout the Freespace journey.

Contents.

| | |
|---|-----------|
| Solutions | 4 |
| Enabling hybrid working | |
| Optimizing real estate | |
| Design ideation and workplace efficiency | |
| Creating safe and hygienic workplaces | |
| Driving towards NET Zero | |
| Improving employee experiences and engagement | |
| Technology | 6 |
| Employee App | |
| Sensors | |
| Signage | |
| Analytics | |
| The SPOT Platform | |
| Scanners | |
| Integrations | |
| Space Planner | |
| Resources | 8 |
| Freespace Index | |
| Professional services | 9 |
| Get in touch | 10 |
| Sustainability statement | 11 |

Our Solutions.



Enabling hybrid working

Create flexible and productive working environments designed to increase collaboration and support hybrid workforces. Providing a variety of settings to support specific work activity needs and adapting space availability around agile working patterns. Gathering valuable insights to inform real-time changes for hybrid working environments.

Optimizing real estate

Discover how you can improve performance and optimize your real estate footprint. Utilizing detailed people, space use and environmental analytics. Combining data from various sources into a central platform to inform real estate decisions and forecast future developments.

Driving towards NET Zero

Gather the analytics to enable real estate optimization and reduce energy consumption across your organization's portfolio. Regulate space demand and ensure efficient use of resources and facilities. Facilitate easy decision making to reduce carbon footprints with data across people, spaces, and the environment in one location.



Freespace solutions change workplace experiences and improve asset management for corporate organizations worldwide. Utilize the technology behind cost savings, increase productivity and improve employee engagement and gather the data your organization needs to connect people with the spaces they work in with real estate strategies.



Creating safe and hygienic workplaces

Deliver a versatile cleaning operation and provide the analytics needed for effective monitoring and compliance. Digitizing cleaning operations with a unified system based on actual occupancy, aligning hygiene data capture with employee communication, to create efficient cleaning operation.



Design ideation and workplace efficiency

Freespace technology can invigorate good workplace design and provide insights to inform future space type needs. Utilizing dynamic space planning tools and real-time data to validate the return from your investment. Comparing the performance of space by types and usage within a central analytics platform to refine current workplace layouts and enable ideation for new office space.



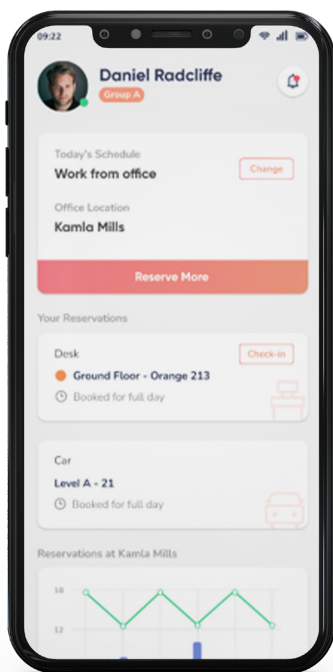
Improving employee experiences and engagement

Connect employees and offices, protect the wellbeing of your workforce and create a seamless employee-centric office experience. Integrating feedback surveys to align qualitative feedback with detailed data insights gathered across people, their environment and workplace preferences, to improve how people use space through visibility and interaction.

Our technology.

Digitize and automate your workplace with Freespace technology

Discover the full range of Freespace technologies changing workplace experiences and improving asset management for corporate organizations worldwide. Utilize the technology behind cost savings, increase productivity and improve employee engagement, gathering the data your organization needs to connect people with the spaces they work in. Accelerate the adoption of workplace change with smart building controls and use reliable data to inform and support future real estate decisions.

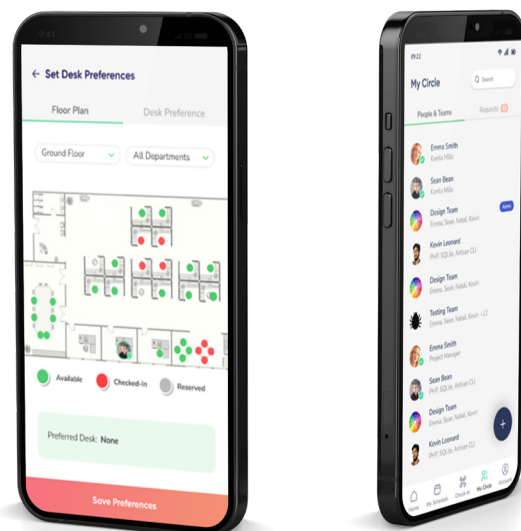


Employee App.

The Employee App is an easy to use platform that allows staff to plan their days into work, colocate with colleagues and collaborate as teams.

- Single sign on for easy access.
- Manage your calendar in conjunction with your colleagues.
- View where your colleagues are located.
- Manage your teams and their days in the office.
- Submit health attestations before space allocation.
- Check spaces are clean before using them.
- Integrate with calendars, sensors and the SPOT platform.

The Employee App helps to design and deliver your culture of hybrid working and automating processes and insights. Employees can reserve different spaces and amenities from desks and rooms to lockers and car parking.





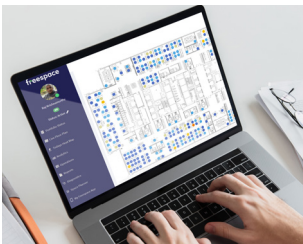
Sensors

Anonymously capturing data in real-time to provide the context for delivering just-in-time intelligence, and services enabling hybrid working and more.



Signage

Availability of spaces constantly changes. Digital signage screens show real-time availability information to facilitate navigation and communication at scale.



Analytics

A central analytics platform, collating various data sources to enable easy decision making and validate the effectiveness of office design.



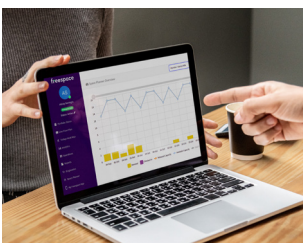
The SPOT Platform

A versatile smart QR code-based platform connecting app users, sensors and FM teams. Marking space activities, such as cleaning or occupancy, for easy information retrieval.



Scanners

The Cleanreader™ scanner is designed to receive notifications for day-time cleaning of spaces, planning end of day cleaning and creating an audit trail of activity.



Space Planner

Set out rules for usage of your office. Manage your national or global portfolio of offices with varying requirements. Track adoption and progress with deployments.



Integrations

Freespace has integrated with several third-party systems to enable occupancy and environmental data to drive automation.

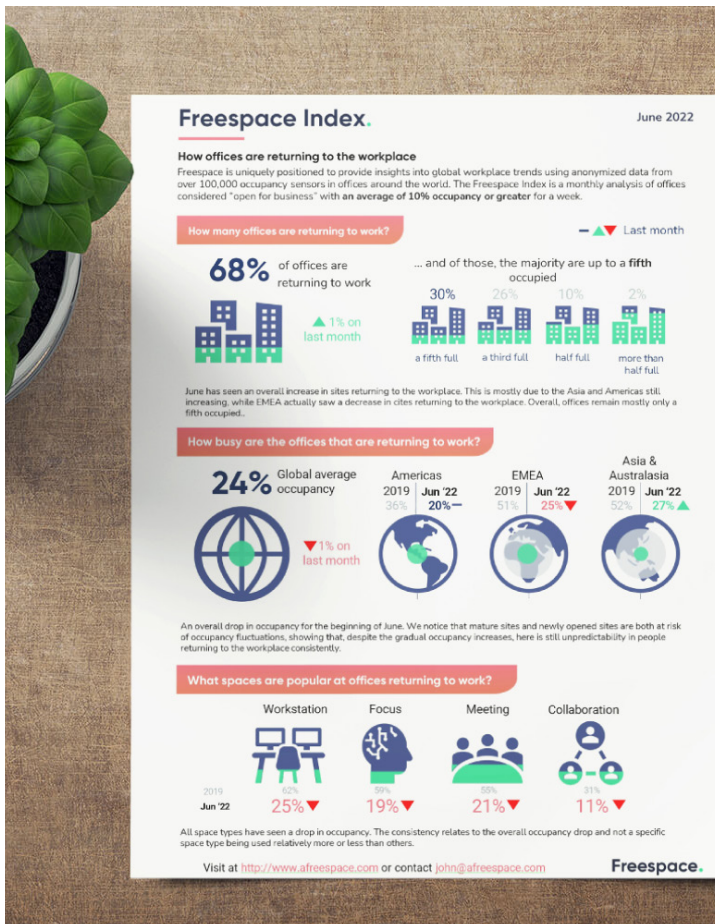


Resources.

Our website is a rich source of information, and you'll find readily available resources to enrich your knowledge of Freespace. From case studies to the events we're attending to in-depth articles about our technology and solutions.

Our resources include:

- Case studies
- Events
- Professional services
- Freespace Index
- Data and security charter
- Client commitment charter



Freespace Index.

The Freespace Index is an analysis office use statistics – of offices considered “open for business” with an average of 10% occupancy or greater a week – providing opportune workplace intelligence to businesses.

Freespace is uniquely positioned to provide insights into global workplace trends using anonymized data from over 100,000 occupancy sensors in offices worldwide. The Index presents monthly occupancy trends highlighting changing weekly work patterns as well as types of spaces in use showing the variation in purpose for office space use across the world.

Professional services.

Freespace professional services allow you to maximize the benefits of the data that you are collecting with the Freespace platform. Our variety of professional services enable you to focus on what you do best – delivering value for your business - while we do the heavy lifting of data manipulation or writing custom code to extract reports.

Automated customized reporting: we can provide automated reporting, delivering analyzed reports of your KPI's to the right people at the right time. Providing reports in multiple formats and automating emails to send to specified subscription groups based on specific use cases.

Data consultancy and support: we can provide answers to your specific real estate data questions, explore and answer your specific business requirements with deep-dive data analysis and compare performance across our client base with benchmarking services. Depend on our experts to help your teams get the best out of collected data, and utilize dedicated training on how to best use Freespace data.

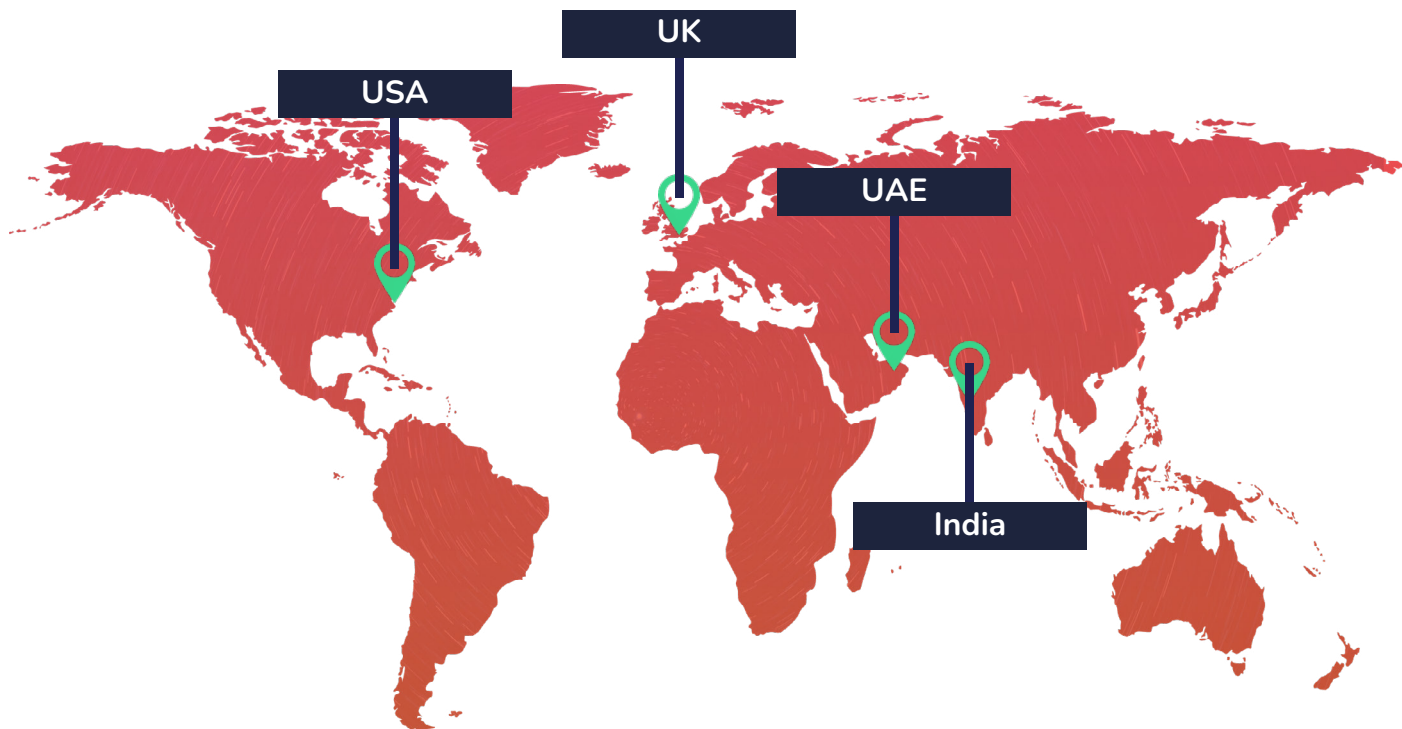


Automated data services: populate your data-lake with a periodic fill of datasets from Freespace sensors and systems. We can assist in setting up data ingestion using our APIs - optimized to deliver maximum intelligence at the lowest CPU costs.

Data configuration and CAD services: we can help with large-scale amendments to your building configuration and floor plans. This includes preparing alternate schemas for digital signage or ingestion into your CAD systems or databases.



Get in touch.



Have a question?

Contact us and one of our experts will be in touch.

Email: hello@afreespace.com

United Kingdom

The Rivers Office Park,
Denham Way,
Maple Cross,
WD3 9YS

USA

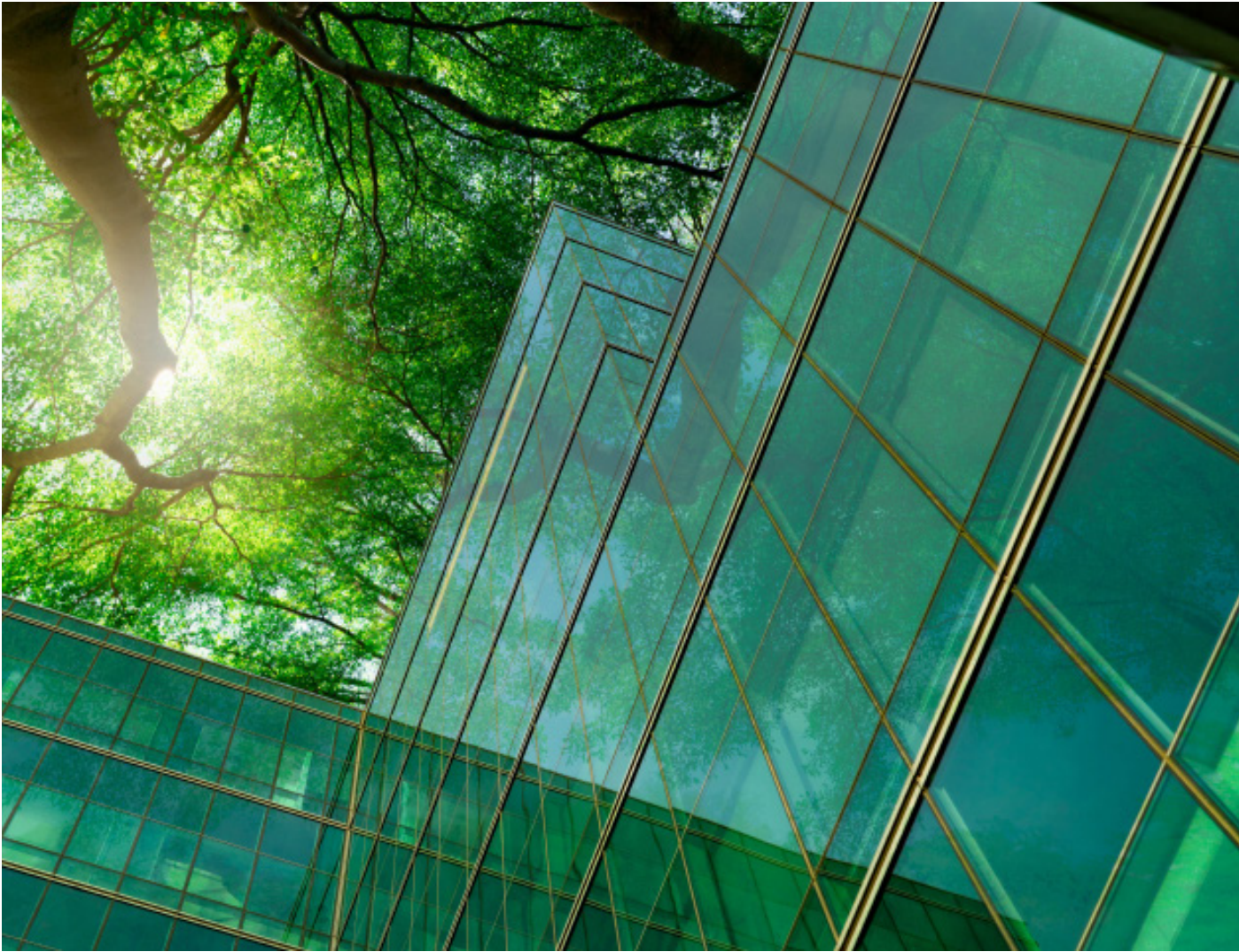
55 Hatchetts Hill Rd.
Suite 200
Old Lyme, CT 06371

India

Unit 105 - 106, 12th Floor,
Embassy 247 IT Park
Lal Bahadur Shastri Marg
Vikhroli, Mumbai
Maharashtra 400079

UAE

EX-82
Ground Floor
Bldg 07 – Co Work
Dubai Internet City
Dubai, United Arab Emirates



Sustainability Statement.

Freespace enterprise solutions create smarter office spaces by dynamically controlling capacity, floor and space use based on actual demand, space availability and attendance.

Leaders utilizing the workplace operating system are able to manage resources more effectively and make data-driven decisions about the future of their office space. They have centralized access to data insights that are essential to the future forecasting of space needs, new working trends, demands, and reducing wasted space and energy.

Reducing food waste, optimizing employee schedules and managing energy consumption are all important aspects of improving the performance of a space. By tracking and evaluating the performance of a space, opportunities to improve these aspects become evident.

Our connected technologies allow leaders to have a clear picture of performance and the tools to track and evaluate the effectiveness of spaces. This can help reduce or expand the office footprint, improve employee wellbeing and engagement, and measure the impact of every change in real-time.



Freespace.

PRESENTS

An integrated enterprise workplace solution.

At Freespace, our purpose is to organize the world's workspaces to make them as hybrid-ready and efficient as possible. In over 150+ cities globally, our enterprise technology solutions have connected organizations with their people. Making the most effective use of the space available can only be achieved when the technology is able to deliver your workplace vision.



**Enabling
Hybrid Working**



**Optimizing
Real Estate**



**Creating Safe and
Hygienic workspaces**



**Design Ideation and
Workplace Efficiency**



**Employee Experiences
and Engagement**



**Driving towards
NET Zero**

